

Seating

Standing

Sleeping

Therapy

JENX[®]
Positioning for life



Multistander 1 by Jenx

A highly versatile standing system, providing 3 in 1 positioning in both neutral or abducted standing for children with moderate to complex needs, from approx. 9 months - 6 years



Always Supportive...

Jenx Limited, Wardsend Road, Sheffield S6 1RQ, United Kingdom
tel: +44 (0) 114 285 3376
email: export@jenx.com
www.jenx.com

JENX[®]
Positioning for life



Multistander 1 by Jenx

This highly versatile standing frame is suitable for children from approx. 9 months to 6 years and provides a high level of postural support in upright, prone or supine with the opportunity to promote neutral or abducted standing posture.

An unrivalled amount of adjustment for height and width teamed with a maximum user weight of 35kg, make Multistander 1 the perfect choice for growing children in multi-user environments. Smooth and easy angle adjustments take the Multistander 1 from horizontal through to upright, facilitating easy transfers in supine and unlimited scope for setting the precise standing angle required for every child.

The deliberately open design ensures visibility of how the user is positioned each and every time. The capacity for outstanding thoracic and pelvic support, coupled with highly adjustable leg positioning options, make the Multistander 1 a great option for almost every child. If you need flexibility, the Multistander has got it!

INNOVATIVE FEATURE

De-rotational Thoracic and Pelvic Straps with Lateral Support Pads

Straps fasten in the centre and adjust independently from either side, enabling a mid-line position to be achieved and maintained. Buckles and hook & loop fastener mean that once adjusted correctly the straps can be fixed, making it difficult for siblings or classmates to tamper with! **Support Pads** available in small, medium and slimline options.

INNOVATIVE FEATURE

Head Support Options

A range of different head support options are available to accommodate different support requirements. From mild support offered by the **Moulded PU Head Support** to the **Multigrip™ Headrest** for those who require much greater support.

INNOVATIVE FEATURE

Prone/Supine Adjustable Tray

Adjustable for height, angle and depth, with unique inbuilt infills to prevent gaps that arms can get stuck in when standing in supine. Supplied with mounting slots for **Elbow Blocks** and a raised contrasting tray edging which helps provide both a visual barrier for children and a useful anchor point for attaching toys or other sensory aids.

INNOVATIVE FEATURE

Practical Modern Look

The white frame provides a fresh modern look, whilst making it easy to spot spills of body fluid/feed and clean before they become hazardous.

INNOVATIVE FEATURE

Leg Positioning Options

The choice of either a single angle adjustable footplate for neutral standing, or a split angle adjustable footplate for abduction standing is available. Both leg positioning options can encourage or accommodate dorsi or plantar flexion.





INNOVATIVE
FEATURE

Independently Adjustable Thoracic & Pelvic Support Boards

Allowing the individual proportions of each child to be catered for, whilst also giving scope to avoid pressure on delicate areas such as feeding buttons.

INNOVATIVE
FEATURE

Individual Leg Abduction

The abduction option allows up to 30° of individual leg abduction in 5° increments.

The **Abduction Accessory** has been designed to allow peer height interaction with the child standing close to floor height.

INNOVATIVE
FEATURE

Angle Adjustment

The frame angle can be adjusted by a smooth gas strut assisted mechanism with the user in the stander. Setting the desired angle is easy using the angle gauge on the frame. When used in supine, the frame can be adjusted to horizontal to aid with transfers.

Always Encouraging...

Standing is a great way to improve your child's outlook on the world and their physical development.

Improves blood pressure & circulation



Aids respiration & speech

Helps digestion, bowel & bladder emptying



Helps relieve pressure created during sitting

Encourages bone & muscle development



Supports pelvis, thighs & feet so children can join in everyday activity

Gives a new perspective and ways to participate



Provides opportunities to increase social skills



Children also gain huge psychological advantages from standing, as well as those important physical and development benefits.

INNOVATIVE FEATURE

PU Support Pads

Easy to clean and impervious to fluids! The boards and support pads on the Multistander 1 are made from polyurethane that has an integral antimicrobial agent within it. This ensures Multistander 1 is quick and easy to keep clean and hygienic, which aids with re-issue for stores or for meeting infection control for multiple users.



Always Configurable Accessories

Multistander 1 by Jenx is a modular product, allowing you to choose specific accessories to meet the exact requirements of each child.

Multistander 1 Frame

The Multistander frame includes:

- Base with 4 lockable swivel castors
- Knee block mounting brackets*
- Single angle adjustable footplate (Neutral standing) or split angle adjustable footplate (Abducted standing)

*NB: **Knee Blocks** must be specified separately.



Support Boards

PU chest & pelvic **Support Boards** in a range of 6 colours.



Colour options available.



Multigrip™ Headrest (supine standing only)

The original and innovative Jenx **Multigrip™ Headrest** is available in 3 sizes and offers adjustment for height, depth and angle.



Oval or Moulded PU Pad Headrest (supine standing only)

Headrests for children who require minimal head support. Comes mounted on a flexible fixing bracket, giving adjustment for height depth and angle.



Colour options available.



Support Pads

PU **Support Pads** can be used at the hips or chest and are adjustable for height, width and angle and can be off-set to brace a scoliosis or accommodate and support unique positioning needs.

Support Pads come complete with appropriate size de-rotational strap as standard.



Colour options available.



Flexible Thoracic Support Pads

Available in 2 sizes, these super flexible support pads (with straps) are designed to provide outstanding positioning with comfort in mind. Independently adjustable for height and width to ensure maximum trunk control.



Cover colour options available.



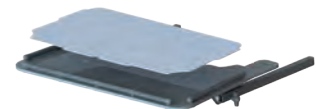
Waistcoat Harness

Provides additional trunk and shoulder stability for children with low tone. An innovative zip system which zips from the bottom up allows for easy-access to gastroonomy feed tubes. Available in 2 sizes with a wipe-clean outer surface fabric.



Tray

Tray for use in prone or supine. Easy to attach and adjust for height, angle and depth, complete with a removable tray infill for use in prone standing.



Chest Prompt

Small foam sternal prompt, used to encourage extension of the thorax and help improve head control. Requires **Support Board Covers** for use.



Support Board Covers

Removable covers which wrap around the centre of the chest and pelvic **Support Boards** to add a splash of colour and for use with **Chest Prompt**.



Colour options available.



Tray Elbow Blocks

Used to encourage arms into a midline position and/or to block excessive retraction.



Abduction Accessory

This innovative accessory allows 0-30° of individual leg abduction in 5° increments. The tool-free mechanism allows simple angle adjustments with minimal effort. Available as a standalone accessory which can be retrofitted to existing Multistanders manufactured after 2015.



Knee Blocks

Innovative and flexible PU **Knee Blocks** available in 2 sizes, adjustable for height, width, angle and depth. Complete with padded, de-rotational knee straps.



Colour options available.

Sandals

Foot positioning available in 2 sizes to accommodate different size feet, even when wearing splints. Jenx **Sandals** are interchangeable across the entire range of Jenx seating and standing products.



Ankle Snugs

An optional foot accessory to the standard **Sandals**, the **Ankle Snugs** offer a unique magnetic buckle fastening mechanism, which can be operated single-handedly.



Sandal Raising Blocks

Available for every size of Jenx **Sandals**, the raising block kits give the **Sandals** that extra bit of height where needed! Use to accommodate leg length discrepancy or to raise the height of the footplate to maximise the available growth.



NB: One kit needed per individual sandal.

Multistander 1 Colour Options



Blue



Pink



Green



Red



Grey



Black

Visit jenx.com for more information.



INNOVATIVE
FEATURE

Knee Blocks

Available in 2 sizes and provided with specially designed straps, the **Knee Blocks** are independently adjustable for height, width, depth and angle, allowing you to achieve the optimum position for each child.

Multistander 1 by Jenx Technical Specifications

IMPORTANT INFORMATION:

Please be aware, some minimum and maximum measurements are achieved by the use of additional accessory components.

| | Measurement | Units | Size 1 MUS01 | Size 1 Abduction MUS01-FABD |
|--|----------------------|----------|--------------|-----------------------------|
| Age Range | approx. | mths-yrs | 9mths - 6yrs | 9mths - 6yrs |
| User Height | min - max | mm | 620 - 1160 | 600 - 1160 |
| User Weight | max | kg | 35 | 35 |
| Chest Width | min - max | mm | 140 - 275 | 140 - 275 |
| Hip Width | min - max | mm | 140 - 275 | 140 - 275 |
| Height (sandal plate to top of upper support board) | min - max | mm | 495 - 900 | 500 - 890 |
| Height (sandal plate to top of head support: Supine only) | min - max | mm | 620 - 1160 | 600 - 1160 |
| Height (floor to top of upper support pad) | min - max | mm | 670 - 940 | 610 - 940 |
| Kneeblock Width (centre to centre) | min - max | mm | 120 - 200 | 130 - 175 |
| Footplate Angle | dorsi - plantar | degrees | 15° - 15° | 15° - 15° |
| Individual Leg Abduction <small>(to achieve full 30° abduction footplate is required to be 140mm off floor level)</small> | min - max | degrees | — | 0° - 30° |
| Tilt-In-Space Angle | horizontal - upright | degrees | 10° - 90° | 10° - 90° |
| Base Footprint | width x length | mm | 565 x 710 | 565 x 710 |

Find Your Distributor

To locate one of our carefully selected distributors near you, visit:
[jenx.com/where-to-buy](https://www.jenx.com/where-to-buy)



@JenxLtd



@JenxLtd



@JenxLtd



Jenx Limited, Wardsend Road, Sheffield S6 1RQ, United Kingdom
 tel: +44 (0) 114 285 3376
 email: export@jenx.com
www.jenx.com

